

IT TAKES A VILLAGE TO RAISE A CHILD

because it's every child's right to be loved

Make a Donation

Support our programmes and the work we do with children and youth. Kindly write out a cheque to "**Beyond Social Services**" and mail it to **26 Jalan Klinik #01-42/52 Singapore 160026** or visit www.beyond.org.sg/donate to donate online.

Enjoy Tax Benefit

All donations to Beyond Social Services will be eligible for IRAS tax deduction of 2.5 times the donated amount. Please note that tax deduction will be automatically included in your IRAS tax assessment.

Should you have any queries, please do not hesitate to email us at mail@beyond.org.sg or call **6375 2940**.



BEYOND
social services

www.beyond.org.sg

IPC Registration No: IPC000355

Poverty affects our society



In Singapore, 1 in every 10 families earns less than \$1,500 a month

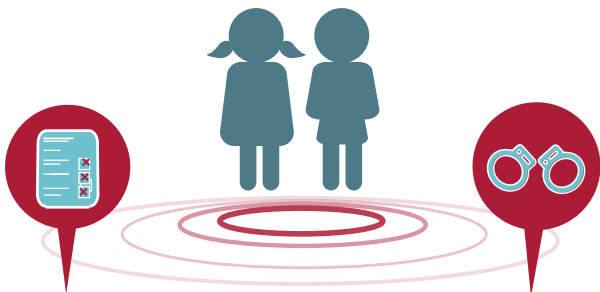


This will meet basic needs such as food, clothing and shelter. However, with the cost of transport, education and healthcare added



It's a struggle to make ends meet

Poverty impacts our children & youth



Income affects academic outcomes. Surveys of primary school students from low-income households show that 63% are failing 1 subject, and 42% are failing 2 subjects.

Poverty brings stress, frustration and hopelessness to families. It also has spillover effects in neighbourhoods.

Income affects behavior. Data shows most youth offenders in Singapore come from low-income households.

Many of these families live in 1 or 2 room flats in the 276 public rental housing blocks across Singapore. We estimate 80,000 children and youth live in these neighbourhoods. Without additional support and opportunities, many children and youth have little hope of escaping their circumstances.

These are the families Beyond reaches out to.

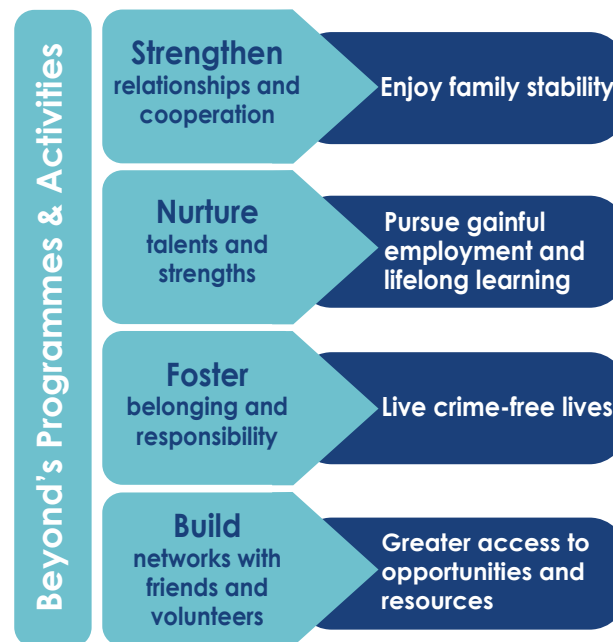
Change is Possible

Children are our future but it is easy to lose sight of this when a child misbehaves. With adequate and appropriate support, disadvantaged young people can make good; because every child has gifts and talents that can be nurtured. At Beyond, we believe a positive future is never beyond anyone.

We can only do this work with your help and generosity. **Please support us.**

We need \$4.2million annually to work with 7,780 young people, 3,972 caregivers and to mobilise our 5,000 volunteers.

Every dollar counts, it goes towards keeping young lives on track.



Beyond is currently operating in **47** public rental housing blocks reaching almost **7,000** households and facilitating mutual help and a **strong** community spirit

Through our work we reach **7,780** young people aged 20 & below

82% of families Beyond works with have a household income of less than **\$1,500**



BEYOND
social services

Who Are We

Beyond Social Services is a charity dedicated to helping children and youth from less privileged backgrounds break away from the poverty cycle. We provide guidance, care and resources that enable families and communities to keep their young people in school and out of trouble.

Our Vision

Beyond's vision is that by 2025, every child and youth in Singapore, despite a disadvantaged background, has the opportunity to refuse a lifestyle of delinquency and welfare dependency.